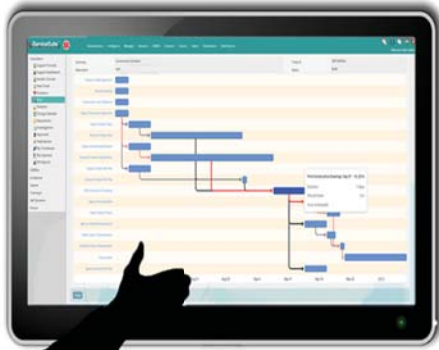


# HEALTHCAREit



**e-ServiceSuite**<sup>TM</sup>  
e-ServiceSuite<sup>TM</sup>

 **simplifying IT**

# PREVENTATIVE MAINTENANCE

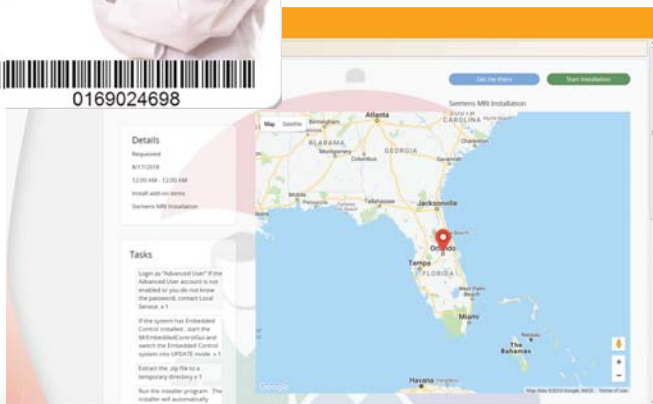
Standardize site inspection processes by ensuring legally required inspections performed and documented. Link inspections to centrally stored site records to provide **documented audit compliance**.

- schedule maintenance from acquisition (cradle-to-grave)
- calendar-driven view of schedule
- link "standardized" inspection (form) document(s)
- track Pass - Fail statistics
- pass - fail "business rule"
- triggered notification(s)
- auto-assignment of inspection maintenance task(s)
- decreased equipment downtime
- increased life expectancy

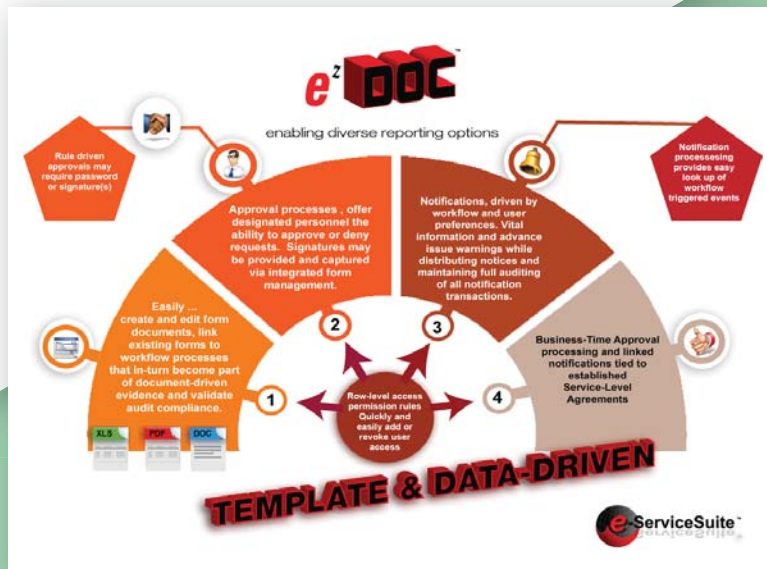
# REAL-TIME LOCATION



**Optional Real-Time Location System (RTLS)** maybe used within the hospital environment to provide **real-time** tracking and management of medical equipment, staff and patients.



# DOCUMENT MANAGEMENT



Simplify the task of managing documents and associations. Centralized storage of all documents with built-in process links to site, staff, equipment and more. On-demand document retrieval avoids potential audit fines and penalties by meeting compliance standards. Document permission model ensures security, providing individual and group access levels as required. Link document process approval steps with built-in signature requirement (requires a touch-based tablet or computer).

# FORMS MANAGEMENT

Institutions have a need for online forms to track a variety of informational needs. Replicating business specific forms is simplified with our ezDOC application. Resulting business forms offer accuracy when linking people, assets, resources and physical locations (automatically when used).

A designated administrator can create/replicate a business reusable template form. The published form may include with any number of fields which can vary from text boxes to drop-downs to selection boxes.



## Dashboard

Full-function application dashboard providing access point for reports and metric analysis



## Google Maps™

Built-in **Google Maps™** integration provides destination site route planning and time to destination



## Timecard Management

Built-in time card integration providing time, expense and milage information. Supports individual and site foreman completion (bulk)

# SAFETY

*Incidents occur every day at the workplace that could result in a serious injury or damage.*

## NEAR MISS REPORTING

- A near-miss program may help prevent future incidents.
- One problem that companies must overcome is employee's fear of being blamed after reporting a near miss.
- Employers need to make the process of reporting a near miss as easy as possible.

**Any unplanned event that did not result in injury, illness, or damage but had the potential to do so is classified as a "Near Miss"**

## How are the facts collected?

The steps in accident investigation are simple: the accident investigators gather information, analyze it, draw conclusions, and make recommendations.

Document Management allows us to automate the entire process, step by step. Use our standardized form generator to offer employees a structured data entry, automate peer review and provide directed notification.

## Reasons to investigate a workplace accident include:

most importantly, to find out the cause of accidents and to prevent similar accidents in the future  
to determine the cost of an accident  
to process workers' compensation claims

to fulfill any legal requirements  
to determine compliance with applicable safety



## HELP ENSURE PATIENT SAFETY

8

THINGS TO LOOKOUT FOR PRIOR TO USING A MEDICAL DEVICE ON A PATIENT

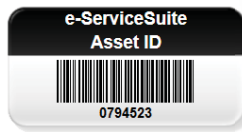
1.  ENSURE THAT THE DEVICE IS CLEAN AND DECONTAMINATED
2.  NO PHYSICAL DAMAGE TO CASE, DISPLAY, MOUNTS, CART OR COMPONENTS.
3.  SWITCHES AND CONTROLS ARE OPERABLE AND CORRECTLY ALIGNED.
4.  LABELS AND WARNINGS ARE PRESENT AND LEGIBLE
5.  BIOMED SAFETY INSPECTION STICKER IS NOT EXPIRED OR MISSING.
6.  INLETS AND HOSES HAVE NO CRACKS, RIPS, OR IS TEARS.
7.  POWER CORD, ACCESSORY CABLES AND CHARGERS ARE NOT DAMAGED, RUSTY OR WET.
8.  FILTERS AND VENTS ARE CLEAN AND UNOBSTRUCTED.

## ENCOURAGE WORKERS TO PARTICIPATE

Capture sufficient data for statistical analysis  
Provide convenient opportunity for **employee participation**

Can be considered to be a leading indicator of performance

# Configuration Management (CMDB)

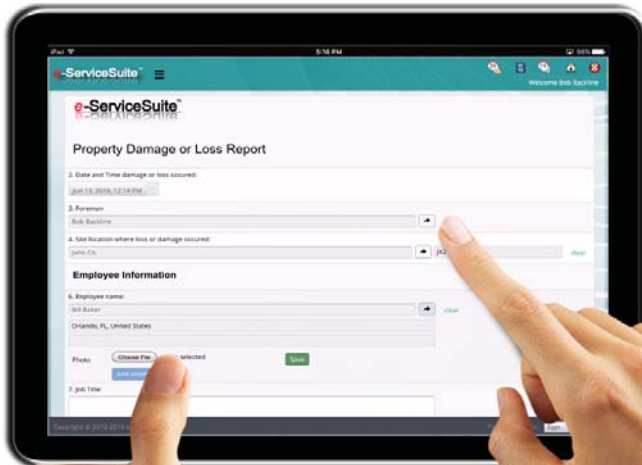


Built-in BarCode and/or RFID recognition allows for easy distribution & assignment of equipment to individual staff members. Inventory tracking provides for easy lookup of assigned equipment. Asset lifecycle offers insight into the cost of the asset and retirement planning.



# Notifications & Alerts

Workflow linked to Service Level Agreements provide application driven Notifications. User receipt of notifications based on user preferences (phone, email, etc.)



# Mobility

Application is mobile ready (internet connection required)



# Application Core Modules

- Incident Management
- Problem Management
- Request Management
- Survey Management
- Service Catalog Management
- Configuration Management (CMDB)
- Inventory Management
- Change Management
- Release Management
- Knowledge Management
- Service Level Management
- Approval Management
- Service Portfolio Management
- Financial Management
- Asset/CI Visualization
- .... more



## Reporting: MS Office

Office integration provides data output to **MS Word™** and **Excel™**. Additional integration provides output directly to Adobe **PDF**



## Chat

Application Service Desk Chat functionality included



## Customization

Application education and customization is included.

# HEALTHCAREit

 simplifying IT



# e-ServiceSuite™

TM

TM

## CONTACT:

**e-ServiceSuite, Inc.**

3202 McClellan Blvd., Unit 5002  
Anniston, AL 36204

tel (256) 676-6700

[www.e-servicesuite.com](http://www.e-servicesuite.com)

